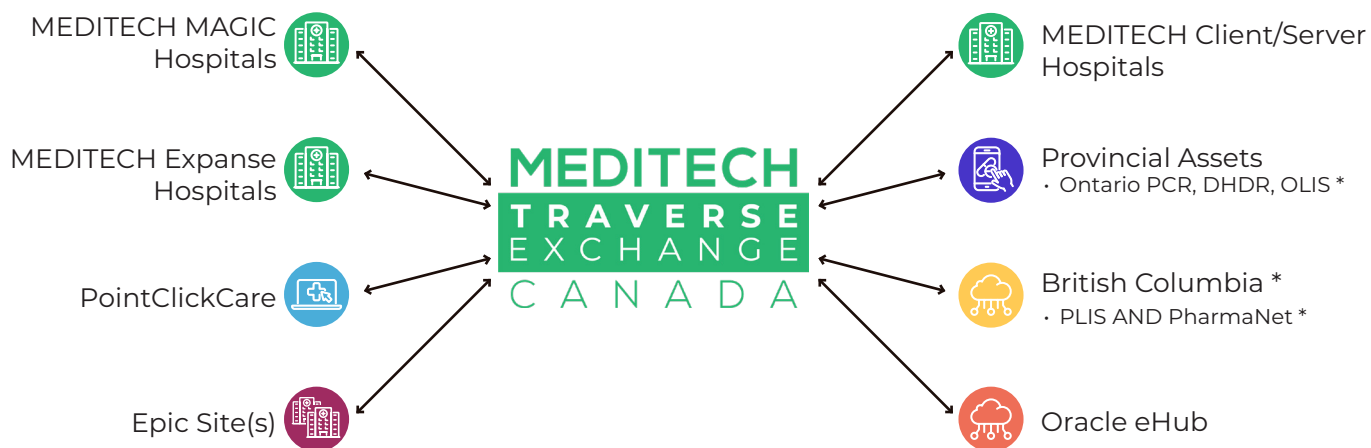
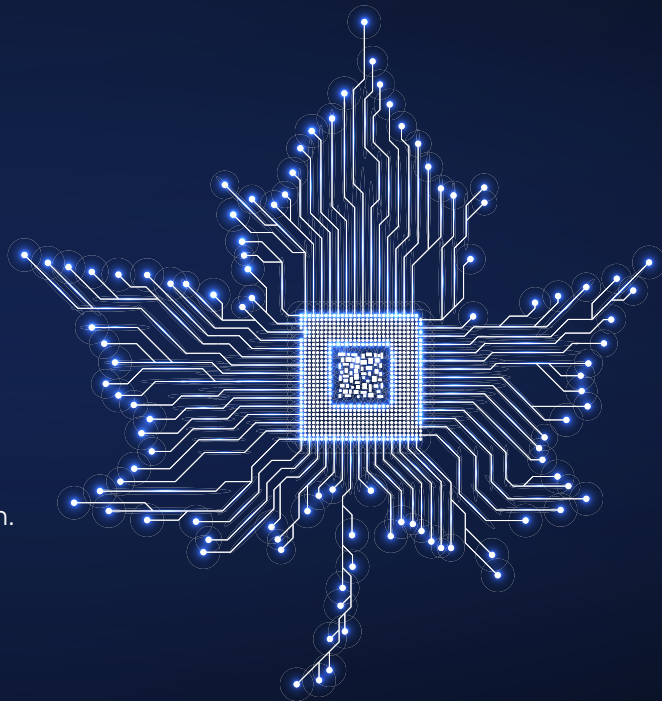


# MEDITECH

## Canada's Intelligent EHR Platform

MEDITECH's Expanse EHR is designed to adapt and grow along with your organization's needs. Our web-based platform is fully **interoperable** for more connected care, leveraging cloud technology and **AI** tools to keep you at the forefront of innovation. Healthcare organizations of all different sizes, specialties, and locations are experiencing the benefits of the Expanse solution.



\* in process

"We are pleased to be one of the first hospitals up and connected on Traverse Exchange Canada as it allows us to share key patient information such as diagnosis, allergies, and medications between hospitals, streamlining communications and improving care of our patients."

**Pakizah Kozak, CIO, Holland Bloorview Kids Rehabilitation Hospital**



**Our customers using Expanse represent geographic regions, health authorities, and hospitals of all types and sizes across the Canadian continuum of care.**

**Regional Health Authorities:** Fraser Health Authority, Interior Health Authority, The One HITS

**Academic:** Humber River Health, Thunder Bay Regional Health Sciences Centre, Health Sciences North

**Specialty:** Ontario Shores for Mental Health Sciences, Waypoint Centre for Mental Health Care, Holland Bloorview Kids Rehabilitation Hospital, and ErinoakKids

**Territorial Health Care Delivery:** Yukon and Nunavut



One of Canada's largest healthcare organizations is deploying Expanse across its 12 hospitals as part of its clinical transformation program. The health authority will be one of the first health systems globally to deploy generative AI to assist with clinical documentation in MEDITECH's Expanse EHR.

## Holland Bloorview

### Kids Rehabilitation Hospital

The largest children's rehabilitation hospital in Canada has been recognized with several prestigious HIMSS validations.

- Stage 7 Adoption Model for Analytics Maturity (AMAM)
- Stage 6 EMR Adoption Model (EMRAM)
- Stage 6 Adoption Model for Analytics Maturity (AMAM)



## Ontario Shores

### Centre for Mental Health Sciences

The first mental health hospital in the world, and the first hospital in Canada, to receive three Stage 7 achievements on HIMSS Maturity Models.

- Revalidated on the EMR Adoption Model (EMRAM)
- Outpatient EMR Adoption Model (O-EMRAM)
- Adoption Model for Analytics Maturity (AMAM)